

MA-AE  
STUDIO 2  
CONTEXTS AND STRATEGIES OF MAKING

SANA AZIZ



# key themes

value

memory

material  
memory

heirlooms

belonging



tangibility  
wearability

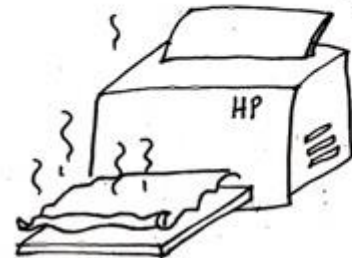
impermanence

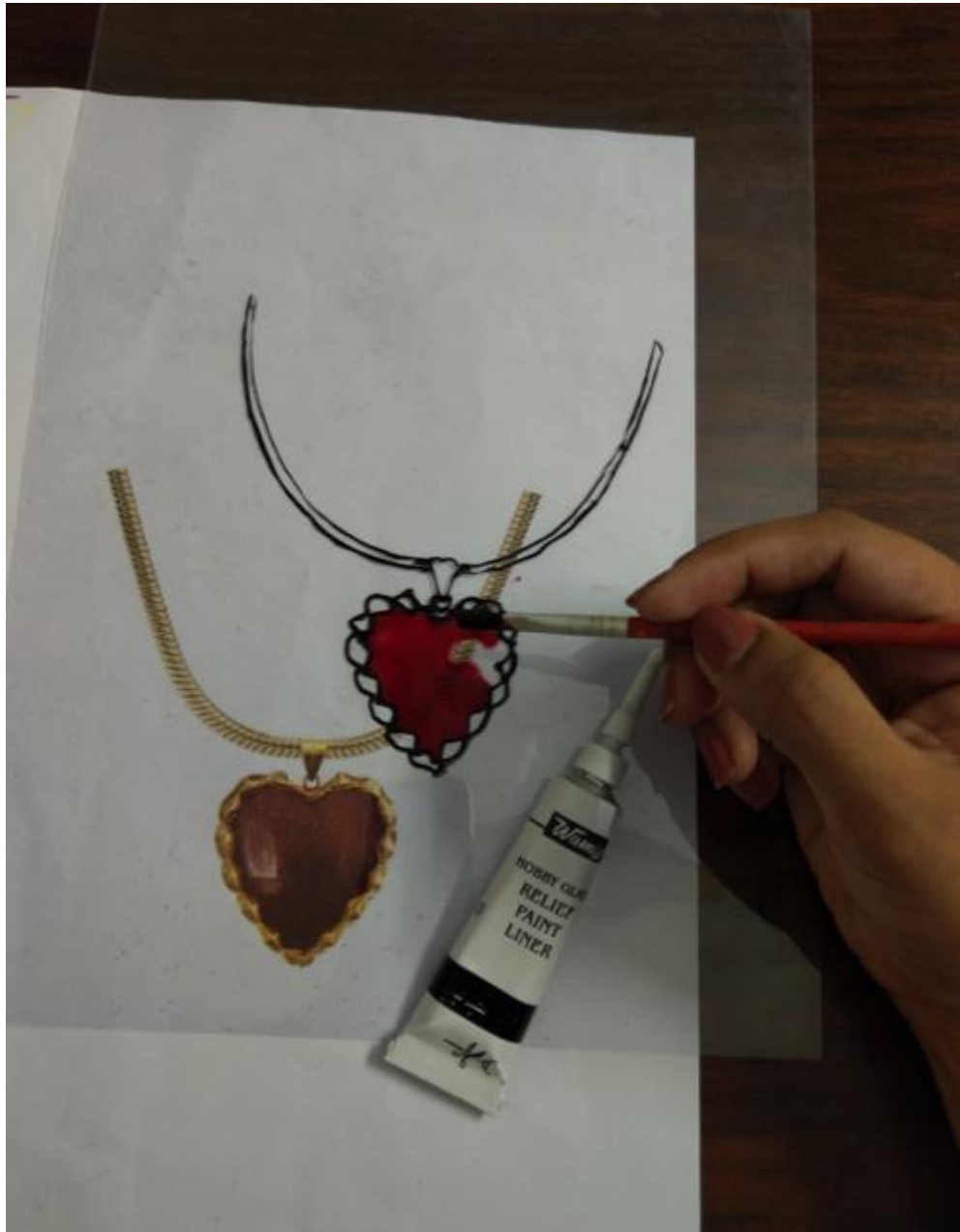






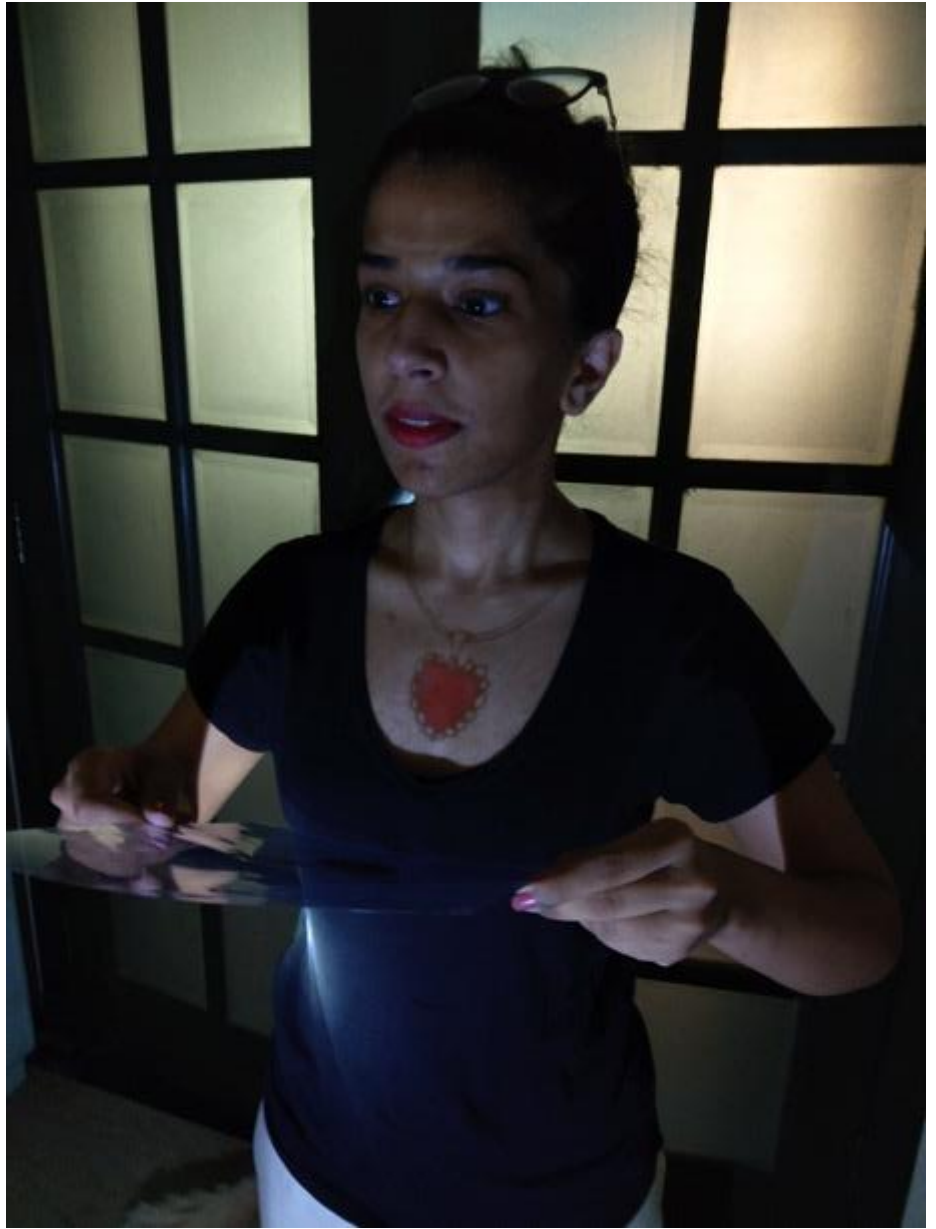
the heat &  
humidity  
seems to have  
taken a toll  
on the  
printer.  
(after destroying  
my hair)

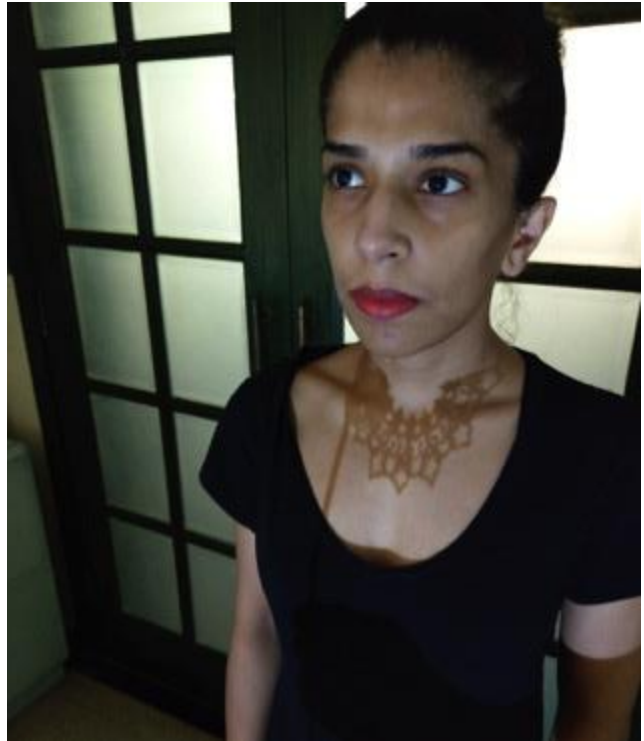






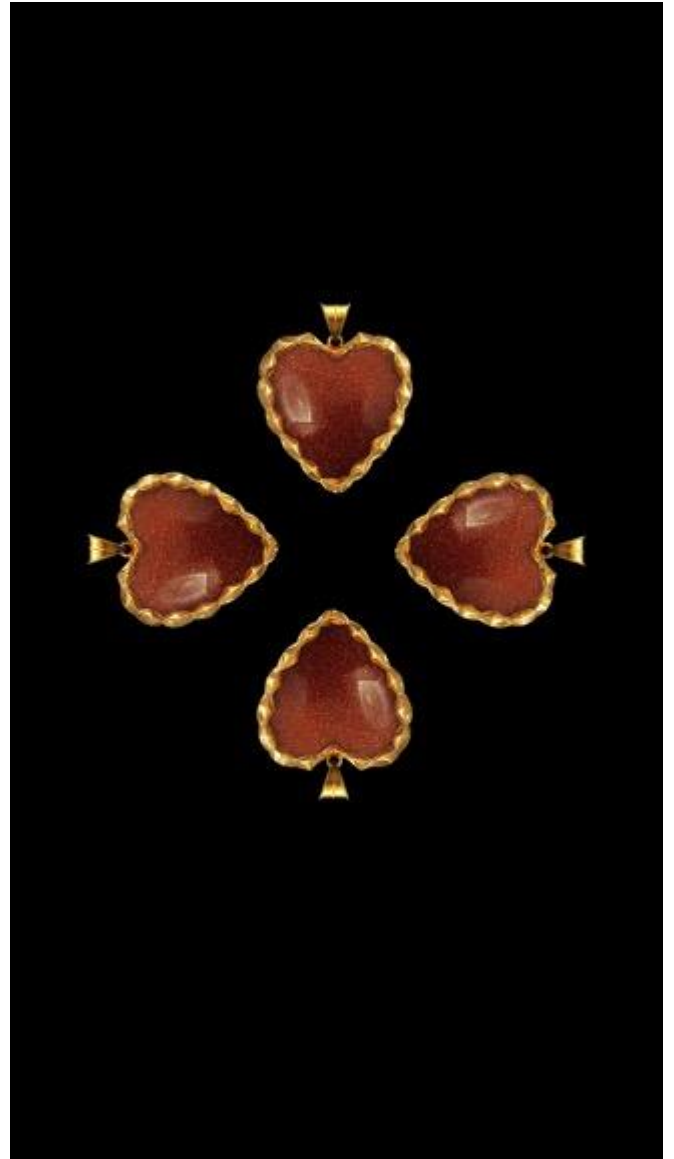


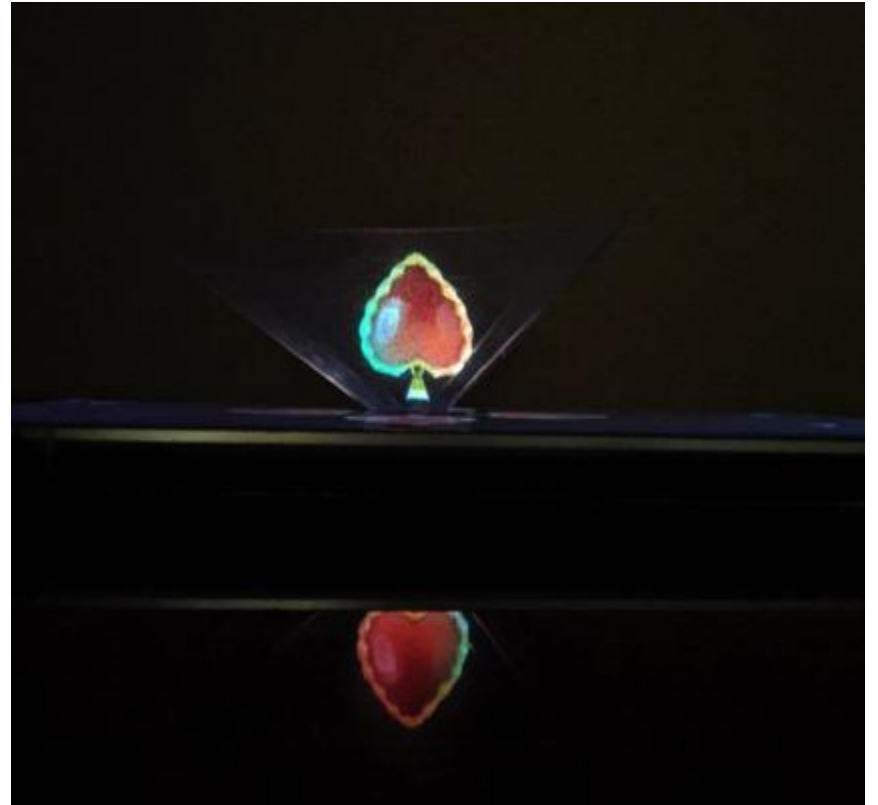
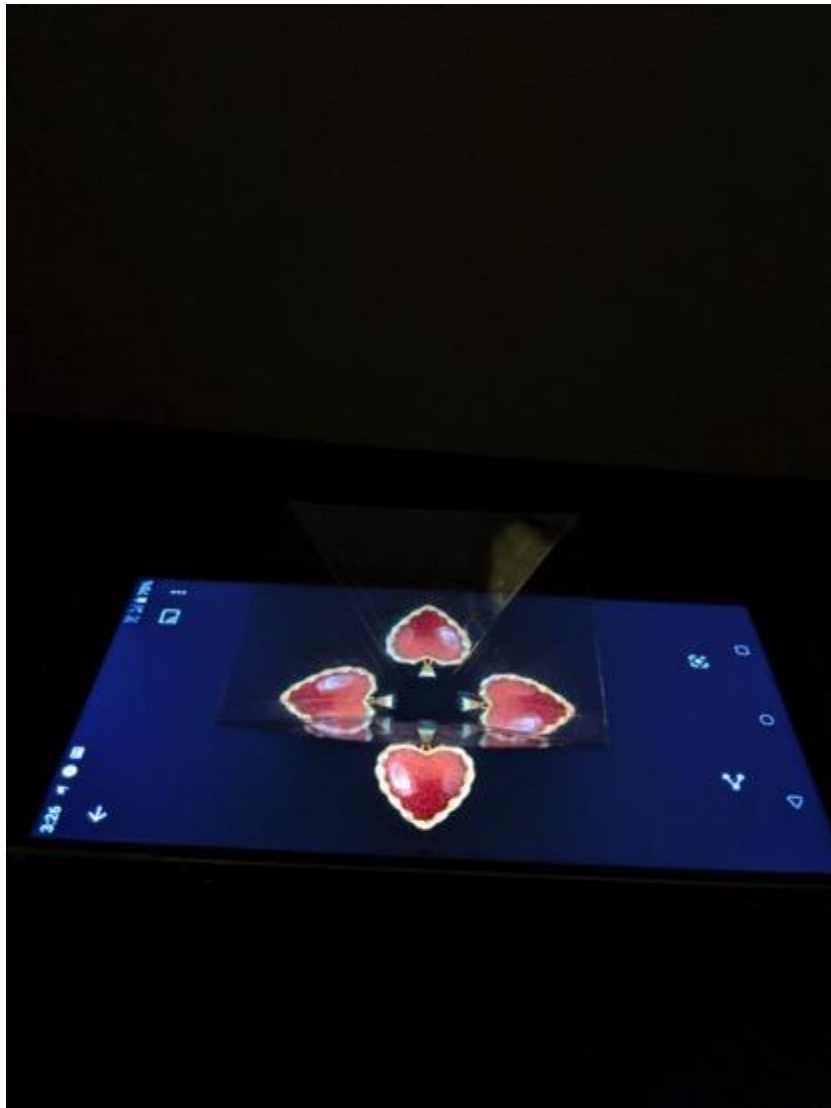


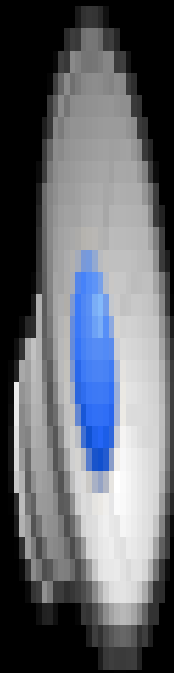








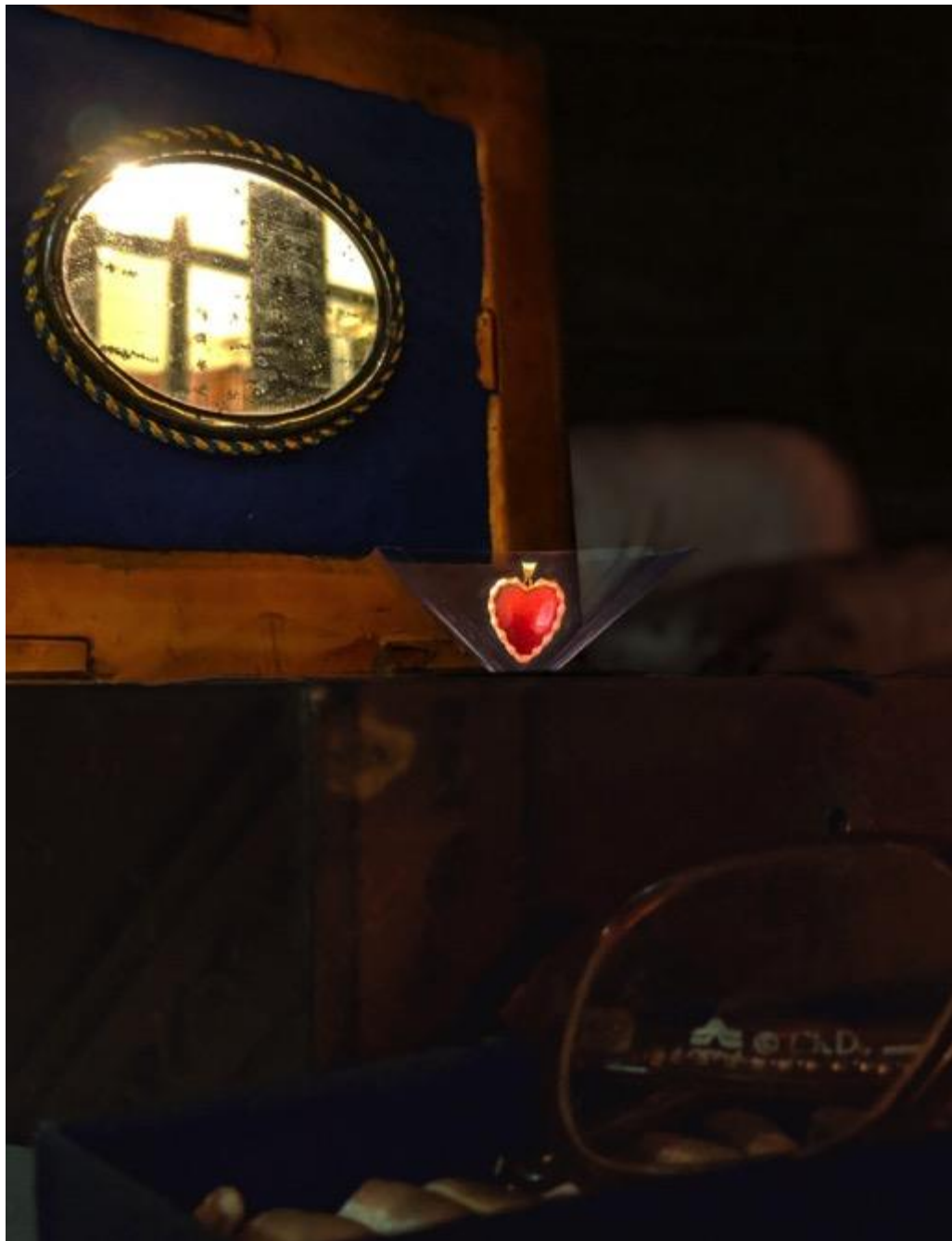














IT'S DONE!

ANALOGUE - DIGITAL - ANALOGUE  
- DIGITAL.